



KONGRES
GEOGRAFII
POLSKIEJ



Geografia bez granic
Geography without borders

LUBLIN
10–14.09.2025

Announcement II

Dear Distinguished Guests,
Dear Colleagues,

It is our pleasure to invite you to the **Congress of Polish Geography**, the largest conference of Polish geographers, which will be held in **Lublin from 10 to 14 September 2025**.

The Congress will take place under the theme "**Geography Without Borders**", fostering reflection and discussion on the richness and diversity of geographical research, both in terms of subject matter and theoretical and methodological approaches. It will also serve as a valuable opportunity for the integration of the entire geographical community, as well as representatives of related disciplines.

As part of the Congress, the **65th Assembly of the Polish Geographical Society** will also be held, further underscoring its significance as the foremost event in Polish geography.

We warmly encourage you to take an active part in the Congress, particularly by presenting your research findings in one of the many thematic sessions or within the poster session. We also hope you will join us for the field sessions, which will provide an enriching complement to the event's programme.

We look forward to welcoming you to Lublin!

Prof. dr hab. Radosław Dobrowolski, *Rector of Maria Curie-Skłodowska University*

Prof. dr hab. Zbigniew Zwoliński, *Chair of the Committee of Geographical Sciences, Polish Academy of Sciences*

Dr hab. Urszula Myga-Piątek, prof. UŚ, *President of the Polish Geographical Society*

Prof. dr hab. Paweł Churski, *Chair of the Conference of Heads of Geographical Institutes*



Conference Objectives

- Assessment of the achievements of Polish geographical research to date
- Discussion on the identity of geography and its contemporary challenges and issues
- Defining directions for development in the fields of research, education, knowledge dissemination, and the commercialisation of research results
- Strengthening collaboration and integrating the geographical community, including academics from all Polish geographical institutions, geography teachers, students, doctoral candidates, and practitioners

Organisers

- Maria Curie-Skłodowska University in Lublin
- Committee of Geographical Sciences, Polish Academy of Sciences
- Polish Geographical Society
- Conference of Heads of Geographical Institutes

Co-organisers

- Faculty of Earth Sciences and Spatial Management
- Institute of Social and Economic Geography and Spatial Management
- Institute of Earth and Environmental Sciences
- Polish Geographical Society Lublin Branch

Venue and Date

Lublin, 10–14 September 2025

Conference Venues

Forum of Young Geography (Wednesday, 10.09.2025)

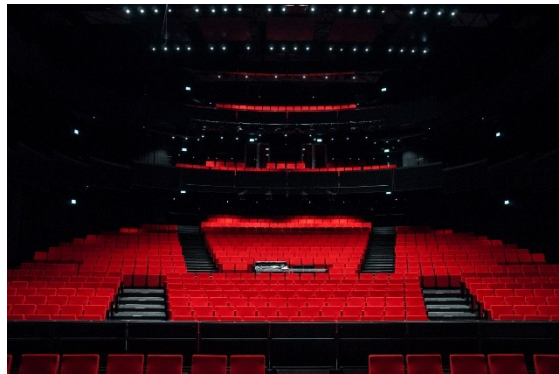
Faculty of Earth Sciences and Spatial Management, Maria Curie-Skłodowska University,
Lublin, al. Kraśnicka 2d



**KONGRES
GEOGRAFII
POLSKIEJ**

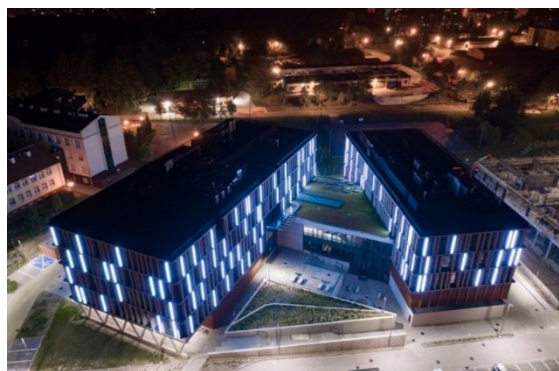
Day 1 of the Conference (Thursday, 11.09.2025)

Centre for the Meeting of Cultures, Lublin, pl. Teatralny 1



Day 2 of the Conference (Friday, 12.09.2025)

Western Campus UMCS, Lublin, ul. Głęboka 43 and 45



Field sessions (Saturday-Sunday, 13-14.09.2025)

Framework Programme

10 September 2025 (Wednesday), Faculty of Earth Sciences and Spatial Management, Maria Curie-Skłodowska University

Young Geography Forum	
9.00-10.00	Participant registration
10.00-11.00	Plenary session Opening of the Forum and welcome address, Plenary lecture
11.00-11.15	Coffee break
11.15-13.15	Oral sessions (kaleidoscopic format)
13.15-13.45	Poster session
13.45-14.45	Lunch
14.45-17.15	Workshop sessions
17.15-17.30	Award ceremony and Forum summary
Congress of Polish Geography 2025 & Young Geography Forum	
19.00-22.00	Ice breaker party

11 September 2025 r. (Thursday), Centre for the Meeting of Cultures, Lublin

Congress of Polish Geography 2025	
8.00-9.00	Participant registration, refreshments
9.00-9.30	Official opening ceremony
9.30-10.30	Plenary Session I
10.30-11.00	Technical break – promotional clips
11.00-11.45	Discussion Panel I: The Future of School and Academic Geography
11.45-12.30	Discussion Panel II: Why Geography? A New Perspective on an Old Scientific Discipline
12.30-13.00	Coffee break
13.00-13.45	Discussion Panel III: The Applicability of Geography
13.45-14.30	Discussion Panel IV: The Future of Geography Through the Eyes of Young Scholars
14.30-15.30	Lunch
15.30-16.30	Jubilee Session: 80 Years of Lublin Geography
16.30-18.00	Polish Geography Gala: Awards, Medals, and Distinctions Ceremony, Speeches by Awardees
18.00-19.30	Formal dinner
GeoArt Lublin Festival	
20.00-20.30	Diaporama
20.30-21.30	Music concert

12 September 2025 (Friday), UMCS Western Campus, Chatka Żaka

Congress of Polish Geography 2025		
8.00-9.00	Participant registration, refreshments	Western Campus
9.00-10.00	Plenary session	
10.00-11.30	Thematic sessions	
11.30-12.00	Coffee break	
12.00-13.30	Thematic sessions	
13.30-15.00	Thematic sessions	
15.00-16.00	Lunch	
16.00-17.30	Thematic sessions	
17.30-18.00	Congress closing session	
	Meeting of the Committee on Geographical Sciences of the Polish Academy of Sciences	
	Meeting of the Main Council of the Polish Geographical Society	
19.00-21.00	Networking banquet	Chatka Żaka

13-14 September 2025 (Saturday-Sunday), Field Sessions



KONGRES
GEOGRAFII
POLSKIEJ

Call for Abstracts – Oral and Poster Presentations

We invite submissions of **oral presentations and posters** within the proposed thematic blocks and sessions:

Block 1: Geography and Society

- Geography in the study of socio-ecological systems (SES) as an integrative multidisciplinary science
- Local communities as agents of spatial change

Block 2: Sustainable Regional Development

- Resilience of cities and regions in the face of contemporary challenges
- Just energy transition in Poland
- Digital transformation and regional development
- Transport infrastructure in Poland – development and challenges
- Protected areas and socio-economic development

Block 3: Historical and Political Geography

- Historical and political geography in an unstable world – past and present
- Geography and geopolitics – contributions of geographers to the Polish school of geopolitics
- Borders in the identification of historical phenomena

Block 4: Borders and Cross-border Cooperation

- Borders and borderlands in times of uncertainty
- Border variability and new forms of transborder cooperation

Block 5: Regional Cooperation

- Polish-Ukrainian regional cooperation in reconstruction and integration
- The future of EU cohesion policy after 2027
- Concept of a new territorial reform in Poland
- Functional urban areas – cooperation, management, planning
- Urban boundaries and suburbanisation processes

Block 6: Tourism and Geotourism

- Geotourism in practice – opportunities and challenges
- A geographical perspective on tourism
- Monitoring and analysis of tourist flows in the Anthropocene

Block 7: Medical Geography

- Medical geography in the face of contemporary civilisational challenges

Block 8: GIS and Geoinformation

- Geoinformation in geography – methods and applications
- GIS in geomorphology – methods, analysis, visualisation
- Digital geomorphological mapping
- Remote sensing of the Earth's surface

XLVII National Cartographic Conference

- Maps, cartographic sources, and GIS tools in interdisciplinary research
- Maps and GIS in geographical education
- Geoinformation and artificial intelligence in cartography

Block 9: Climate and Environmental Research

- Quaternary: climate, environment, and human interactions
- Consequences of climate change
- Climate: past, present, and future
- Water: scarcity, excess, and quality
- Fires – their impact on the environment and society

Block 10: Polar Region Studies

- Permafrost and its role in the geographical environment
- Climate and environmental changes in polar regions
- Ice boundaries and the future of polar areas



KONGRES
GEOGRAFII
POLSKIEJ



KONGRES
GEOGRAFII
POLSKIEJ

Block 11: Geodiversity and Landscape

- Geodiversity, geosites, and geoparks
- Geosystem services of geodiversity
- From landscape perception to management
- The impact of landscape changes in Poland on national and regional development

Block 12: Geoarchaeology

- Geoarchaeology – achievements and challenges in the 21st century

Block 13: Geology, Geomorphology, and Soil Science

- Geomorphological processes in the Anthropocene
- Soil as an environmental archive
- Lublin amber – resources, research, and perspectives

Block 14: Research Methods

- Public statistics and modern research methods
- Geography and statistics – an interdisciplinary approach to spatial analysis

Block 15: Others

This block is open to participants wishing to submit a presentation or poster on geographical and related disciplines that do not fit within the thematic scope of the above-listed sessions.

Block 16: Poster Session

VIII National Scientific Conference on Light Pollution

UNESCO Biosphere Reserves Programme Forum

Please submit your abstracts via the online form available at: <https://www.kgp2025.umcs.pl>

Submission deadline: 31 May 2025. The **Scientific Committee** will decide on the acceptance of submitted topics.

Young Geography Forum

The **Young Geography Forum (10.09.2025)** is an initiative aimed at integrating young researchers from various academic institutions while providing a platform for exchanging scientific experiences and presenting innovative research in geography and related disciplines. The Forum seeks to promote **interdisciplinary research approaches**, foster **collaboration among early-career scientists**, and inspire them to take on new research challenges.

The event is primarily intended for **early-career researchers** (up to seven years after obtaining a PhD), **doctoral candidates**, and **students**.

Participants can register in one of two categories:

- **Active participation**, which includes presenting a paper in a kaleidoscopic session, a poster, or both,
- **Passive participation**, which involves attending the Forum without delivering a presentation.

The deadline for submitting participation applications is **31 May 2025**. Please submit your **application via the online form** available at: <https://www.kgp2025.umcs.pl>

For more information, visit: <https://www.kgp2025.umcs.pl>

Free Workshops for Primary and Secondary School Teachers

On **12 September (Friday)**, free workshops will be held for **primary and secondary school teachers**, covering the following topics:

- Artificial Intelligence in Geography Education
- Application of GIS Tools in Geography Lessons
- Climate Databases
- Methodological Inspirations in Geography Teaching

These workshops aim to provide educators with **modern teaching tools, innovative methods, and practical applications** to enhance geography education. For more details and registration, please visit: <https://www.kgp2025.umcs.pl>.



KONGRES
GEOGRAFII
POLSKIEJ

The **GeoArt Lublin Festival** is a unique artistic event that brings together **music, visual arts, photography, film, and dance**, creating a captivating narrative about our planet. Inspired by **geographical processes, natural phenomena, and the beauty of landscapes**, artists invite participants to immerse themselves in a **multidimensional experience**, showcasing both the **majesty of the Earth** and the **environmental challenges of the modern world**.

The festival accompanies the **Congress of Polish Geography 2025**.

Key attractions of the **GeoArt Lublin Festival**:

- **Diaporama** – an Audiovisual Spectacle. A mesmerising audiovisual performance featuring extraordinary photographs by Marek Kucharczyk and Wojciech Zgłobicki, showcasing the geological and geographical wonders of our planet—from delicate crystal structures and ancient life traces to monumental desert and mountain formations. The experience will be enhanced by an electronic soundtrack composed by Rafał Rozmus, bringing out the dynamics and emotional depth of the images. This fusion of visuals and sound will offer the audience a fresh perspective on inanimate nature as an endless source of beauty and inspiration
- **Symphonic Concert** – the Tomasz Momot Orchestra, featuring guitarist Marek Raduli, will present an extraordinary symphony inspired by the sounds of nature and the energy of our planet. Combining traditional instruments with modern technologies, the musicians will craft a musical journey through the harmony of the globe. The concert will be accompanied by visual projections illustrating key stages of Earth's evolution—from the birth of the oceans and volcanic eruptions to modern landscapes. This synchronisation of music and imagery will provide an immersive, multisensory experience.
- **Poster Biennale** – the central theme of this unique exhibition is the dialogue between art and science. The Poster Biennale will serve as a platform for reflection on geographical phenomena and their significance in today's world.
- **Nature Film Screening** – the audience will have the opportunity to watch carefully curated films that reveal both the aesthetic beauty of geographical phenomena and the pressing challenges of our time, such as climate change, urbanisation, and environmental degradation. These screenings will encourage a deeper understanding of the planet's complexity.
- **Dance Performance – Earth, Water, Air, Fire** – *The four elements – Earth, Water, Air, and Fire* – with a fifth force binding them together: Dance. Interwoven with the power of nature, movement becomes a driving force, a living energy. The zMYŚL Student Dance Theatre, celebrating a decade of artistic expression at UMCS Chatka Żaka, will present a captivating performance that embodies the connection between human movement and the natural elements.
- **Geomapping** – in the heart of Lublin, building facades will come to life through a spectacular projection mapping show created by Paweł Łuciuk. These immersive projections, inspired by landscapes and geographical processes, will integrate art into the urban space, transforming the city itself into a part of the festival experience.
- **Nature Photography Exhibition** – a showcase of works by young photographers, selected through a competition, capturing the geographical diversity of the world. The exhibition will highlight both the monumental grandeur of nature and the subtle details that often escape everyday perception.
- **Stanisław Bałdyga's Graphic Art Exhibition** – the central theme of this exhibition will be the many faces of the Earth. Stanisław Bałdyga, one of Poland's most acclaimed linocut artists, has gained recognition for his technically and artistically masterful compositions, featured in numerous national and international exhibitions. His work has been presented at over 50 solo exhibitions and nearly 300 group shows worldwide.

The **GeoArt Lublin Festival** is a celebration of Earth's beauty in a multidimensional form – from majestic mountains to delicate crystal structures, from symphonic sounds to rhythmic dance. It is a space where art becomes a bridge between awareness and emotion, wonder and reflection.

Field Sessions

As part of the Congress, we invite you to participate in the following **one-day or two-day field sessions**:

One-day sessions – 13 September 2025 (Saturday):

1. Lublin at the Crossroads of Cultures

Lublin: *Castle Hill – National Museum, Old Town, Jewish Quarter, Lublin Archcathedral, Orthodox Cathedral, Cemetery of Three Denominations*

Price: 150 zł (includes transport, entrance tickets, guide, lunch)

2. Natural Heritage of Lublin / English-language session

Lublin: *City Centre and Old Town, Castle Tower, Holy Trinity Chapel, Lublin Underground Route (walking tour, ~5 km)*

Price: 150 zł (includes transport, entrance tickets, guide, lunch)

3. Economic Lublin

Lublin: *Plage & Laśkiewicz Metal Works, Moritz Agricultural Machinery Factory, Wolski Agricultural Machinery Factory, Sugar Refinery / "Stock" Distillery, Kijoków Brewery, Vetter Brewery, Lublin Metropolitan Railway Station*

Price: 150 zł (includes transport, entrance tickets, guide, lunch)

4. Natural and Cultural Heritage of the Proposed Lesser Poland Gorge of the Vistula Geopark

Lesser Poland Gorge of the Vistula: *Bochotnica Quarry, Korzeniowy Dół Ravine, Doły Podmularskie Ravine, Kazimierz Dolny, Kaliszany Quarry, Skarpa Dobrska, and geotourism & enotourism aspects (visit to a vineyard)*

Price: 250 zł (includes transport, entrance tickets, packed meal, vineyard visit)

5. Natural and Cultural Determinants of Loess Landscape Development in Western Lublin Region

Nałęczów Plateau: *Parchatka, Kazimierz Dolny – Korzeniowy Dół Gully, Celejów (paper mill, Zimny Dół gully), Wąwolnica (Castle Hill), Mareczki – Lipinki Gully*

Price: 150 zł (obejmuje: transport, bilety wstępu, obiad)

6. Natural and Cultural Treasures of the Lublin Region – Lublin Amber and the Zamoyski Residence in Kozłówka

Lubartów Heights: *Amber mine in Niedźwiada, Zamoyski Museum in Kozłówka*

Price: 150 zł (includes transport, entrance tickets, lunch)

7. Geodiversity of Eastern Roztocze

Eastern Roztocze: *Siedliska – Petrified Trees Museum, Dziewięcierz Bunker (part of the Molotov Line), Brusno Stare – multi-denominational cemetery, Nowe Brusno, Huta Różaniecka*

Termin: od 13.09.25, godz. 7.30 do 13.09.25, ok. godz. 20.00

Price: 250 zł (includes transport, entrance ticket, packed meal)

Two-day sessions – 13-14 September 2025 (Saturday-Sunday):

8. Natural and Cultural Uniqueness of Roztocze Landscapes

Szczebrzeszyn and Tomaszów Roztocze: *Zamość, Szczebrzeszyn, Szczebrzeszyn Landscape Park, Kawęczyn, Turzyniec, Zwierzyniec, Roztocze National Park, Echo Ponds, Czartowe Pole, quarry and observation tower in Józefów*

Price: 450 zł (includes transport, accommodation, full board, entrance tickets)

9. Natural and Cultural Environment of the Podlasie Gorge of the Bug River

Podlasie Gorge of the Bug River: *Neple – Kamienna Baba Terminal Moraine, "Podlasie Switzerland" Nature Reserve, Pratulín – Sanctuary of the Blessed Podlasie Martyrs, Janów Podlaski – Janów Podlaski Stud Farm, Mielnik – chalk outcrop, "Bug Gorge near Mielnik", Castle Hill, Grabarka – Holy Mountain of Grabarka*

Price: 450 zł (includes transport, accommodation, full board, entrance tickets)



KONGRES
GEOGRAFII
POLSKIEJ

10. Socio-economic Changes and Environmental Protection in the Northern Part of the Sandomierz Basin

Northern Sandomierz Basin: *Łysaków – disused quarry, old lime kilns, Lasy Janowskie Landscape Park – Imielty Ług Nature Reserve, Łązek Garncarski – pottery traditions, Stalowa Wola – Museum of the Central Industrial District, Tarnobrzeg – Polish Sulfur Industry Museum, reclamation of former sulfur mining sites*

Price: 450 zł (includes transport, accommodation, full board, entrance tickets)

Please submit your registration via the **online form available at** <https://www.kgp2025.umcs.pl>.
Deadline: 31 May 2025.

IMPORTANT: If the number of registrations is too low, the organisers reserve the right to cancel selected field sessions and offer alternative options to participants..

Post-Congress Publications

A key scientific outcome of the **Congress of Polish Geographers** will be the publication of articles containing written versions of the papers presented at the event. Selected works will have the opportunity to be published in **renowned scientific journals**, such as:

- „Geographia Polonica” (100 MNiSW points)
- „Quaestiones Geographicae” (100 MNiSW points)
- „Czasopismo Geograficzne” (70 MNiSW points)
- „Landform Analysis” (70 MNiSW points)
- „Polish Cartographical Review” (70 MNiSW points)
- „Przegląd Geograficzny” (70 MNiSW points)
- „Annales Universitatis Mariae Curie-Skłodowska”, sectio B – Geographia, Geologia, Mineralogia et Petrographia (40 MniSW points)

The **Organising Committee** is actively working to secure additional **publication opportunities** for Congress participants. Detailed information regarding publication conditions will be provided in the **Third Circular**.

Conference Fee

Registration by 31 May 2025:

- Regular fee– 600 zł
- Students, PhD candidates, and retirees – 300 zł
- Participation on the first day only (Centre for the Meeting of Cultures) – 300 zł

Additional fee: Icebreaker party on **10 September 2025** –100 zł

Registration after 31 May 2025:

- Regular fee – 800 zł
- Students, PhD candidates, and retirees – 400 zł
- participation on the first day only (Centre for the Meeting of Cultures) – 400 zł

Additional fee: Icebreaker party on **10 September 2025** – 100 zł

Bank account details for payments:

- PLN: 68 1140 1094 0000 2905 1600 1131
- EUR: 83 1140 1094 0000 2905 1600 1054

Payment reference: "First Name Last Name - KGP2025".



KONGRES
GEOGRAFII
POLSKIEJ

Accommodation

We encourage participants of the **Congress of Polish Geography 2025** to take advantage of **special accommodation offers** provided by the following hotels:

Hotel Holiday Inn Express

ul. Spadochroniarzy 9, 20-043 Lublin

<https://www.hiexlublin.pl/pl/>

This is the recommended hotel for congress participants. For reservations made by 30 April 2025, the following discounted rates apply:

- Single room: 180 zł
- Double room: 220 zł

Prices will increase after 30 April 2025. When making a reservation, please provide the code "Kongres Geografii Polskiej" to receive the special rate.

Hotel Mercure

Aleje Racławickie 12, 20-037 Lublin

<https://all.accor.com/hotel/3404/index.pl.shtml>

Negotiated discounted rates available until 31 May 2025. After this date, participants will receive a 15% discount off the daily rate.

Hotel Campanile

ul. Lubomelska 14, 20-067 Lublin

<https://www.campanile.com/pl/nasze-hotele/polska/hotele-lublin/>

Reservations must be made using the form available on the Congress website (www.kgp2025.umcs.pl). Discounted rates apply until 15 August 2025.

IBB Hotels (Grand Hotel)

ul. Krakowskie Przedmieście 56, 20-002 Lublin

<https://ibbhotellublin.com/>

10% discount off the daily rate using the code "Kongres Geografii Polskiej"

Hotel Victoria

ul. Prezydenta Gabriela Narutowicza 58/60, 20-016 Lublin

<https://victorialublin.pl/>

Dom Studencki Femina

ul. Mariana Langiewicza 20, 20-035 Lublin

e-mail: femina@mail.umcs.pl

Special rate for Congress participants: 50 PLN per night.

Participants are responsible for making their own accommodation reservations.



KONGRES
GEOGRAFII
POLSKIEJ

Chairs

- Prof. dr hab. Paweł Churski (*Adam Mickiewicz University in Poznań*)
- Prof. dr hab. Radostaw Dobrowolski (*Maria Curie-Skłodowska University in Lublin*)
- Dr hab. Urszula Myga-Piątek, prof. UŚ (*University of Silesia in Katowice*)
- Prof. dr hab. Zbigniew Zwoliński (*Adam Mickiewicz University in Poznań*)

Members

- Prof. dr hab. Krzysztof Bąk (*University of the National Education Commission in Kraków*)
- Dr hab. Anita Bokwa, prof. UJ (*Jagiellonian University*)
- Dr hab. Mariusz Czepczyński, prof. UG (*University of Gdańsk*)
- Prof. dr hab. Marek Drewnik (*Uniwersytet Jagielloński*)
- Dr hab. Elżbieta Grzelak-Kostulska, prof. UMK (*Nicolaus Copernicus University in Toruń*)
- Prof. dr hab. inż. arch. Barbara Gronostajska (*Wrocław University of Science and Technology*)
- Dr hab. Michał Habel, prof. UKW (*Kazimierz Wielki University in Bydgoszcz*)
- Prof. dr hab. Piotr Hulisz (*Nicolaus Copernicus University in Toruń*)
- Dr hab. Wojciech Janicki, prof. UMCS (*Maria Curie-Skłodowska University in Lublin*)
- Dr Wojciech Jarczewski (*Institute for Urban and Regional Development*)
- Dr hab. Iwona Jażewicz, prof. UP (*Pomeranian University in Słupsk*)
- Prof. dr hab. Maciej Jędrusik (*University of Warsaw*)
- Prof. dr hab. Tomasz Kaczmarek (*Adam Mickiewicz University in Poznań*)
- Prof. dr hab. Wioletta Kamińska (*Jan Kochanowski University in Kielce*)
- Prof. dr hab. Ewa Kmiecik (*AGH University of Science and Technology in Kraków*)
- Prof. dr hab. Leszek Kolendowicz (*Adam Mickiewicz University in Poznań*)
- Prof. dr hab. Tomasz Komornicki (*Stanisław Leszczycki Institute of Geography and Spatial Organization, Polish Academy of Sciences*)
- Dr hab. Robert Krzysztofik, prof. UŚ (*University of Silesia in Katowice*)
- Dr hab. Stawomir Kurek, prof. UKEN (*University of the National Education Commission in Kraków*)
- Dr hab. Agnieszka Kwiatek-Sołtys, prof. UKEN (*University of the National Education Commission in Kraków*)
- Dr hab. Andrzej Laskowski, prof. UEK (*Cracow University of Economics*)
- Prof. dr hab. Ewa Łupikasza (*University of Silesia in Katowice*)
- Prof. dr hab. Leszek Marynowski (*University of Silesia in Katowice*)
- Prof. dr hab. inż. Jacek Matyszkiewicz (*AGH University of Science and Technology in Kraków*)
- Dr hab. Danuta Piróg, prof. UKEN (*University of the National Education Commission in Kraków*)
- Dr Jolanta Rodzoń, prof. UMCS (*Maria Curie-Skłodowska University in Lublin*)
- Prof. dr hab. Grażyna Rosa (*University of Szczecin*)
- Dr hab. Robert Szymtkie, prof. UWro (*University of Wrocław*)
- Prof. dr hab. Przemysław Śleszyński (*Stanisław Leszczycki Institute of Geography and Spatial Organization, Polish Academy of Sciences*)
- Dr hab. Paweł Terefenko, prof. US (*University of Szczecin*)
- Dr hab. Stawomir Terpiłowski, prof. UMCS (*Maria Curie-Skłodowska University in Lublin*)
- Prof. dr hab. Zbigniew Ustrnul (*Jagiellonian University*)
- Prof. dr hab. Vít Voženilek (*Palacký University in Olomouc*)
- Dr hab. inż. Janusz Walo, prof. PW (*saw University of Technology; President of the Association of Polish Surveyors*)
- Prof. dr hab. Marek Więckowski (*Stanisław Leszczycki Institute of Geography and Spatial Organization, Polish Academy of Sciences*)
- Prof. dr hab. inż. Ewa Wojciechowska (*Gdańsk University of Technology*)
- Prof. dr hab. Marcin Wójcik (*University of Łódź*)



KONGRES
GEOGRAFII
POLSKIEJ

Organising Committee

- Prof. dr hab. Radosław Dobrowolski – *Rector of Maria Curie-Skłodowska University, Chair*
 - Prof. dr hab. Andrzej Miszczuk – *Vice-Chair*
 - Dr hab. Przemysław Mroczek, prof. UMCS – *Vice-Chair*
 - Dr Jolanta Rodzoń, prof. UMCS – *Dean of the Faculty of Earth Sciences and Spatial Management UMCS*
 - Prof. dr hab. Wojciech Zgłobicki, *Vice-Dean of the Faculty of Earth Sciences and Spatial Management UMCS*
 - Dr hab. Wojciech Janicki, prof. UMCS – *Director of the Institute of Socio-Economic Geography and Spatial Management UMCS*
 - Dr hab. Sławomir Terpiłowski, prof. UMCS – *Director of the Institute of Earth and Environmental Sciences UMCS*
 - Dr hab. Michał Łuszczuk, prof. UMCS – *Vice-Director of the Institute of Socio-Economic Geography and Spatial Management UMCS*
 - Prof. dr hab. Irena Agnieszka Pidek – *Vice-Director of the Institute of Socio-Economic Geography and Spatial Management UMCS*
- Mgr Paweł Czubla
 - Dr Piotr Demczuk
 - Dr Justyna Dresler
 - Dr inż. Dorota Dymek
 - Mgr Izabela Ejtel
 - Dr Łukasz Franczak
 - Mgr Katarzyna Jaksim
 - Dr Andrzej Jakubowski – *sekretarz*
 - Mgr Justyna Jawiarczyk
 - Dr inż. Jolanta Jóźwik
 - Dr Krzysztof Kałamucki, prof. UMCS
 - Dr Elżbieta Kardaszewska
 - Mgr Anna Kiełb
 - Mgr inż. Grzegorz Kosmala
 - Dr Renata Krukowska
 - Dr inż. Sara Lehmann-Konera
 - Mgr Krzysztof Łoboda
 - Dr Katarzyna Mięsiak-Wójcik
 - Dr Anna Orłowska
 - Prof. dr hab. Jan Rodzik
 - Lic. Maria Rymczuk
 - Mgr inż. Agnieszka Ryś
 - Mgr inż. Jakub Skibiński
 - Dr Magdalena Suchora
 - Dr Joanna Szczęsna
 - Mgr Piotr Urbański
 - Dr Sylwester Wereski
 - Dr hab. Monika Wesotowska, prof. UMCS
 - Dr Michał Zembrzycki
 - Mgr Beata Zielińska

Important dates

Registration and abstract submission (online form) – **31 May 2025 r.**

Confirmation of acceptance of the presentation – **30 June 2025 r.**

Conference fee – **30 June 2025 r.**

Kontakt

Faculty of Earth Sciences and Spatial Management, Maria Curie-Skłodowska University
Al. Kraśnicka 2d, 20-718 Lublin, Poland
E-mail: kgp2025@mail.umcs.pl

For more information, please visit the Congress website

<https://www.umcs.pl/en/congress-of-polish-geography-2025,31331.htm>



We look forward to seeing you in Lublin!